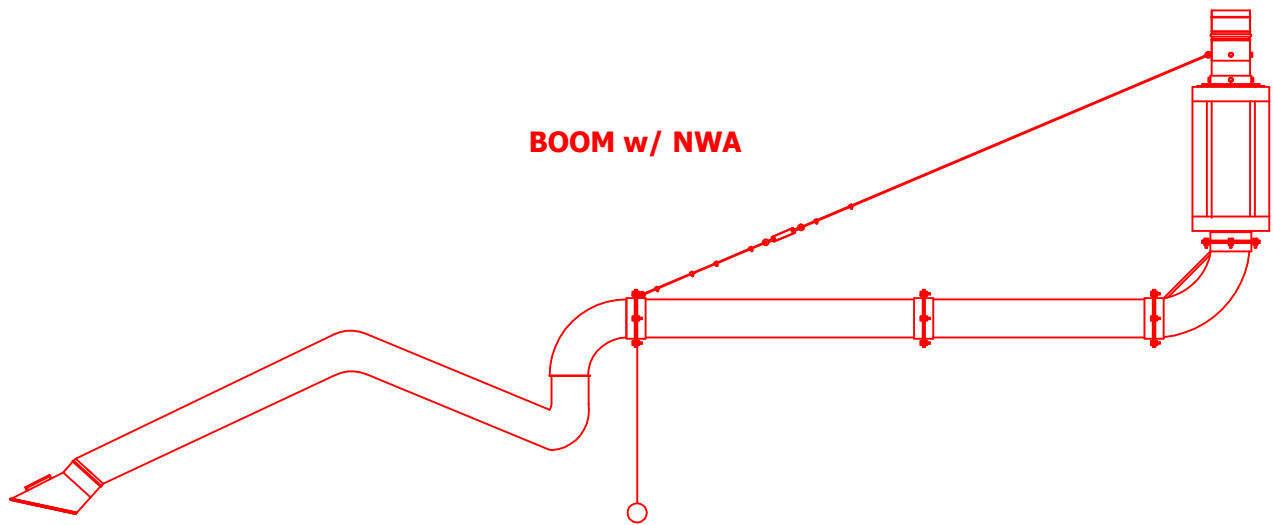
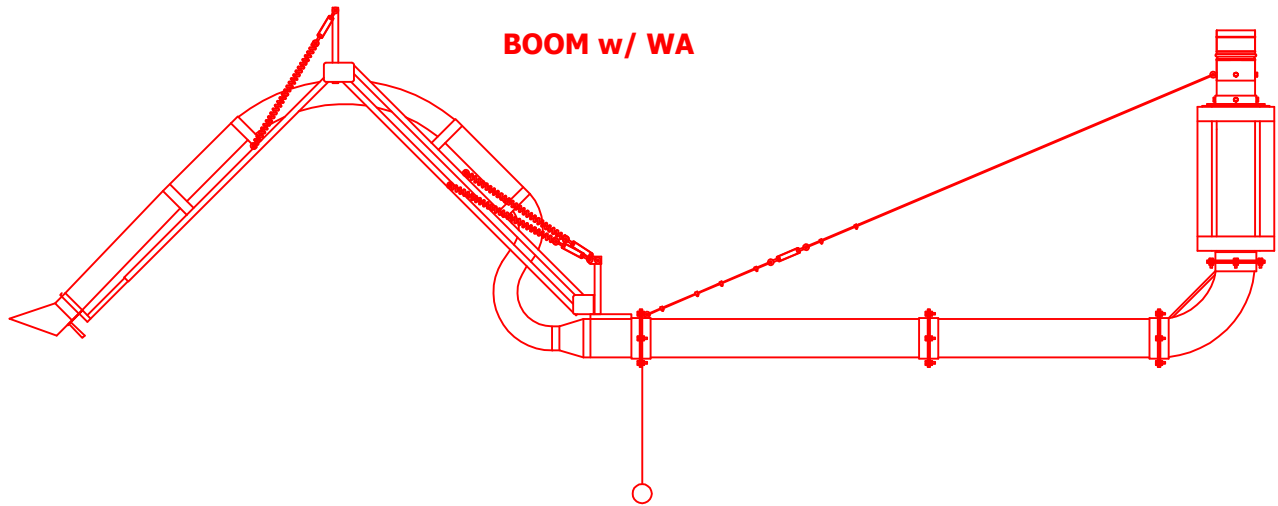


NSGV Boom Arm w/ Weld Arm



800-728-8368 (phone) / 217-422-5387 (fax) / jmdilligaf@aol.com / NSGV.com

STANDARD SIZES:

BOOM10 - 10'-0"

BOOM12 - 12'-0"

BOOM15 - 15'-0"

BOOM20 - 20'-0"

NSGV Boom Arms are designed to increase your work area when overhead obstructions won't allow for a standard overhead system. The boom arm is constructed from 1/8" thick carbon steel tubes, 1/4" angle-iron frame, flange connections, stainless steel swivel joint, 3/16"Ø x 7 x 19 aircraft cable, turnbuckles, channel, & clamps. The entire arm assembly is powder coated for maximum corrosion resistance. Coupled with either the (NWA) or (WA) weld arm allows maximum reach for fume removal.

**CONSULT FACTORY FOR
NON-STANDARD LENGTHS**